

# TIGUA<sup>Led</sup> FLOOD

## LED FLOODLIGHT

### Fixtures for Focused or Flood Illumination

Universal Rectangular Body Size With Large Heat Sink Capacity In EN44300 Aluminium Alloy With Anti Scratch Passivation Treatment and RAL7011 Colour Finish.



reddot award 2018  
winner

### Plug & Play Electrical Connection

IP67 ( 5x1.5mm terminals)

### Light weight and compact

Easy to install weighing only 6.5 kg

### Flexible

Easy to install (+135°)  
thanks to the adjustable  
bracket supplied with the fixture

### Optimum management of the lighting flux

Thanks to the many light  
distributions, you can illuminate  
different places: industrial, sport,  
architectural, etc.

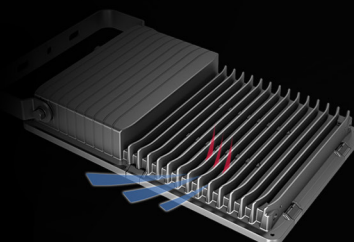
### Uniform Lighting

Multiple photometric solutions  
based on 5 Beam angles utilizing  
PMMA or PC Lenses

## Key features



Anti condensation breather  
valve to vent pressure build-up inside  
the light fixture



Heat Dissipation is aided  
By The LED & Power Supply  
Positioning



Large Heat Sink Capacity In  
EN44300 Aluminium Alloy With Anti  
Scratch Passivation Treatment.

# TIGUA<sup>Led</sup> FLOOD

## LED FLOODLIGHT



Dust and water jets/immersion



High level of impact resistance



LDT files & lighting schemes



as per ISO 9223

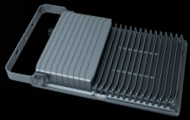


RISK GROUP ZERO

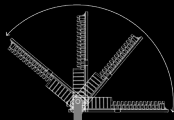


ENERGY SAVING

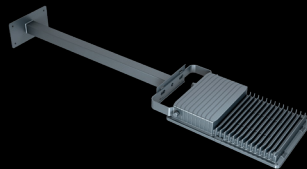
### Suspension options



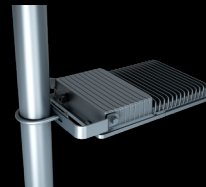
Adjustable wall bracket



Bracket for wall-mounting



Pole collar (adaptor)



Pole-top spigot (adaptor)

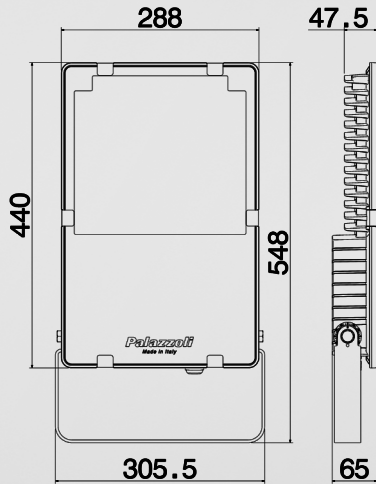
### Technical specifications

<b>Conformity to standards</b>	Directive 2014/35/EU EN 60598-1: 2015 EN 60598-2-1:1997 EN 60598-2-5: 2015 EN 60598-2-22: 2014 EN 62471: 2008 Directive 2014/30/EU EN 62493: 2015 Directive 2011/65/EU ENEC in progress for approval
<b>Body material</b>	Aluminium alloy EN 44300
<b>Surface treatment</b>	Passivation with fluoro-zirconium
<b>Diffuser material</b>	Extraclear tempered glass
<b>Painting</b>	Hot polymerized non-toxic polyester
<b>Colour</b>	RAL 7011
<b>Weight</b>	6,5 kg
<b>Device tilting</b>	-135 ° - +135 °
<b>LED device efficiency</b>	≥ 110lm/W

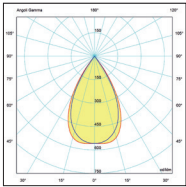
<b>LED Colour Temperature</b>	4000K (other temperatures on request)
<b>CRI</b>	≥ 80
<b>Insulation class</b>	II
<b>Rated voltage</b>	200-240 V 50-60 Hz
<b>Protection against surge discharges</b>	8 kV common mode 6 kV differential mode EN 61000
<b>Power factor</b>	≥ 0,95
<b>Unified Glare Rating (UGR)</b>	≤ 22
<b>Max cable section</b>	1,5 mm <sup>2</sup>
<b>Entry cable diameter</b>	7-13 mm
<b>Estimated device lifetime</b>	L80 B20 @ 100.000h Tq=-30 °C - +40 °C
<b>Storage temperature</b>	-40 °C - +70 °C
<b>Operating temperature</b>	-30 °C - +40 °C (on request up to +55 °C or other special configurations)

# Tigua Flood

## LED Floodlight

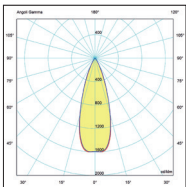


### Extra wide beam - Symmetrical light distribution



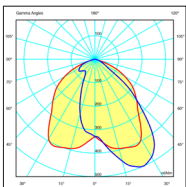
Power (W)	Luminous flux (lm) Tj= 25 °C	Part numbers	Power Supply
67W	9250lm	<b>817008</b>	Electronic
99W	13875lm	<b>817012</b>	
132W	18500lm	<b>817016</b>	
164W	23125lm	<b>817020</b>	
196W	27750lm	<b>817024</b>	

### Narrow beam - Symmetrical light distribution



Power (W)	Luminous flux (lm) Tj= 25 °C	Part numbers	Power Supply
67W	9250lm	<b>817058</b>	Electronic
99W	13875lm	<b>817062</b>	
132W	18500lm	<b>817066</b>	
164W	23125lm	<b>817070</b>	
196W	27750lm	<b>817074</b>	

### Extra wide beam - Asymmetrical light distribution



Power (W)	Luminous flux (lm) Tj= 25 °C	Part numbers	Power Supply
67W	9250lm	<b>817108</b>	Electronic
99W	13875lm	<b>817112</b>	
132W	18500lm	<b>817116</b>	
164W	23125lm	<b>817120</b>	
196W	27750lm	<b>817124</b>	



**CORROSION C4**  
as for Per ISO9223



**IP66**  
Dust and water jets/immersion



**IK08**  
High impact resistance



**ENERGY SAVING**

#### CLASSIFICATION

Insulation Class II

#### LED

4000K  
CRI>80

#### CONSTRUCTION

**Body:**EN46100 aluminium alloy

**Diffuser:**Extra clear tempered glass

Anti-scratch passivation treatment

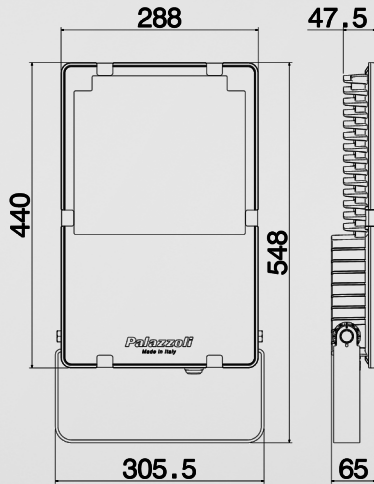
**Equipment included:** Bracket for wall mounting

Electrical supply through rapid connector

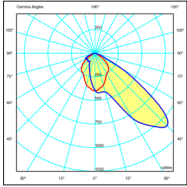
Note : the declared values may be subject to a tolerance of +/- 7%

# Tigua Flood

## LED Floodlight

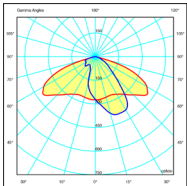


### Narrow beam - Asymmetrical light distribution



Power (W)	Luminous flux (lm) Tj= 25 °C	Part numbers	Power Supply
67W	9250lm	<b>817158</b>	Electronic
99W	13875lm	<b>817162</b>	
132W	18500lm	<b>817166</b>	
164W	23125lm	<b>817170</b>	
196W	27750lm	<b>817174</b>	

### Extra wide - Roadway light distribution



Power (W)	Luminous flux (lm) Tj= 25 °C	Part numbers	Power Supply
67W	9250lm	<b>817208</b>	Electronic
99W	13875lm	<b>817212</b>	
132W	18500lm	<b>817216</b>	
164W	23125lm	<b>817220</b>	
196W	27750lm	<b>817224</b>	



**CORROSION C4**  
as for Per ISO9223



**IP66**  
Dust and water jets/immersion



**IK08**  
High impact resistance



**ENERGY SAVING**

#### CLASSIFICATION

Insulation Class II

#### LED

4000K  
CRI>80

#### CONSTRUCTION

**Body:**EN46100 aluminium alloy

**Diffuser:**Extra clear tempered glass

Anti-scratch passivation treatment

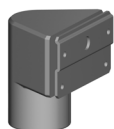
**Equipment included:** Bracket for wall mounting

Electrical supply through rapid connector

Note : the declared values may be subject to a tolerance of +/- 7%

# Tigua Flood

## LED Floodlight - ACCESSORIES



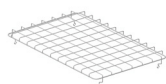
Universal spigot adaptor for pole-head fixing for Ø 60mm and Ø 76 mm

### Manufacturing Material

Powder coated electrogalvanized steel

### Part number

**811908**



Protective wire guard

### Manufacturing Material

Electrogalvanized steel

### Part number

**811911**



Support for wall mounting with 750 mm projection

### Manufacturing Material

Powder coated electrogalvanized steel

### Part number

**811914**



Kit composed of collar and plate for fixing on Ø 60 mm and Ø 80 mm pole

### Manufacturing Material

Electrogalvanized steel

### Part number

**811912**



**CORROSION C4**  
as for Per ISO9223



**IP66**  
Dust and water jets/immersion



**IK08**  
High impact resistance



**ENERGY SAVING**

### CLASSIFICATION

Insulation Class II

### LED

4000K  
CRI>80

### CONSTRUCTION

**Body:**EN46100 aluminium alloy  
**Diffuser:**Extra clear tempered glass

Anti-scratch passivation treatment

**Equipment included:** Bracket for wall mounting  
Electrical supply through rapid connector

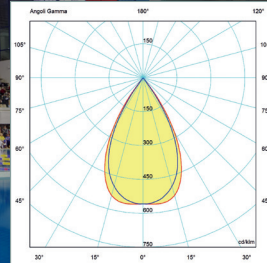
Note : the declared values may be subject to a tolerance of +/- 7%

# Tigua Flood

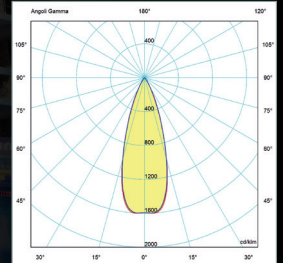
## LED Floodlight



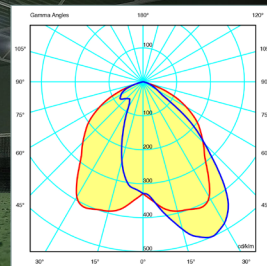
**Symmetrical  
extra-wide**



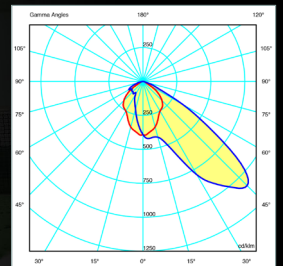
**Symmetrical  
narrow**



**Asymmetrical  
extra-wide**



**Asymmetrical  
narrow**



**Roadway  
extra-wide**

